

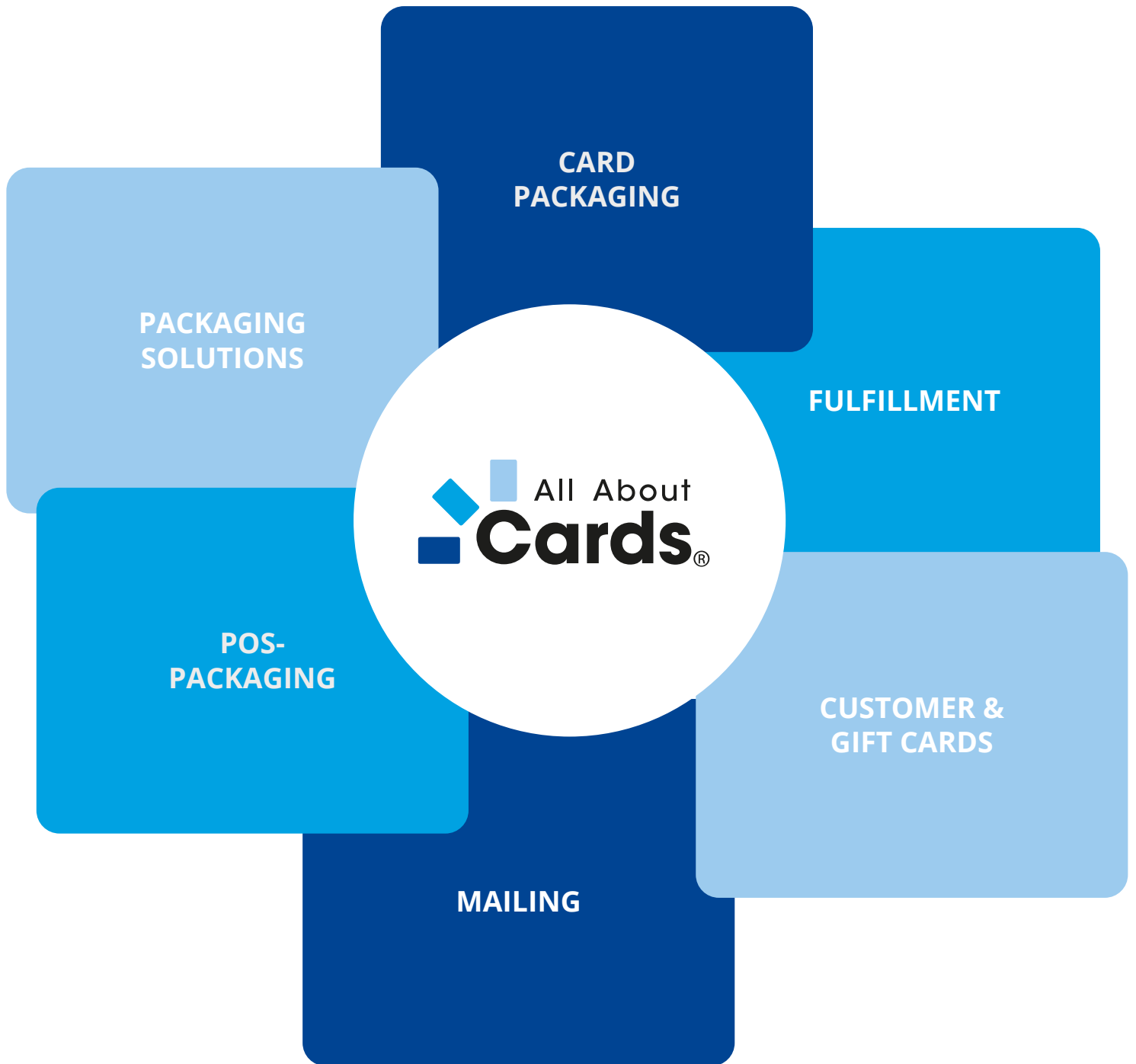
Product catalogue

# Card packaging



# Competence

around the Card



# All About Cards

## Flexible packaging solutions for your needs

High-quality, innovative packaging gives your cards undivided attention. They represent the value of your gift, customer or bank cards as soon as they are handed out and convey the desired information about the card and its use.

Whether a simple card holder for the point of sale (POS), the right packaging for a marketing campaign or special outer packaging for customer cards - we offer you customised packaging solutions that meet your needs and applications. You can choose between different materials, from classic cardboard and metal to various wood or leather versions. Thanks to sustainable materials, packaging from All About Cards conveys your company's environmental awareness. Give your card packaging an additional distinctive touch by choosing one of our high-quality finishing options such as cold foil, spot varnish, hot stamping foil, embossing or hololam foil. We also have the right customised solution for the addition of fanfolds, booklets or special give-aways.

Once you have decided on card packaging, we will also be happy to take care of additional services such as mailing and fulfillment or the entire handling of your customer loyalty campaign.

Have we aroused your interest? Then please contact us. We will be happy to advise you.



TRUST  
IN OUR  
MANY YEARS OF  
EXPERIENCE!

Have fun discovering.

## TOPSELLER

### Our top seller symbol

These items are particularly popular with our customers. Not only are they among the most popular products in our range, they also consistently impress with outstanding feedback. Their popularity is the result of a successful combination of quality, functionality and suitability for everyday use - characteristics that make them real favourites and inspire time and time again.





# Products

1	Card carrier .....	06
2	Folding card simple .....	09
3	Folding card double .....	13
4	Packaging in box form .....	18
5	Carrier card with cover .....	20
6	Packaging with effect .....	21
7	Environmentally friendly packaging .....	26
8	Premium packaging solutions .....	29
9	Festive packaging solutions .....	31
10	Packaging as a mailing .....	33
11	Finishes and card holders .....	37
12	Our services .....	38

# Card carrier



**TOPSELLER**

**981-002-0001**  
**Card holder with**  
**POS suspension**

Picture print 300 g/m<sup>2</sup>  
Offset printing 4c/4c  
95 x 135 mm | 2-sided  
MOQ: 500 pieces

**981-003-0003**  
**Folding card with detachable**  
**POS hanger and**  
**plug-in fastener**

Picture print 300 g/m<sup>2</sup>  
Offset printing 4c/4c  
closed 104 x 182 mm  
open 277 x 182 mm | 6-sided  
MOQ: 500 pieces



So simple and yet so effective: present your card on a card carrier! Whether as a two-sided carrier, fold-out or as a flyer with detachable registration form - we offer you the right solution for your application. Various finishes give your packaging the finishing touch: from simple to elegant.

## Further options:

- UV varnish
- Lamination
- Hot stamping foil
- Environmentally friendly material
- Customised formats

## Card carrier

**981-002-0023**

**Card holder with POS suspension  
and slide-in unit**

Picture print 350 g/m<sup>2</sup>  
Offset printing 4c/4c  
95 x 135 mm | 2-sided  
MOQ: 500 pieces



**981-002-0005**

**Card holder with POS suspension  
and push-in fastener**

Image printing 300 g/m<sup>2</sup> | offset printing 4c/4c  
closed 95 x 95 mm  
open 95 x 164 mm | 4-sided  
MOQ: 500 pieces

**981-002-0022**

**Foldable card carrier,  
with detachable  
POS suspension**

Picture print 300 g/m<sup>2</sup>  
Offset printing 4c/4c  
closed 98 x 135 mm  
open 196 x 235 mm | 6-sided  
MOQ: 500 pieces



## Card carrier



**981-002-0038**

**Foldable card holder,  
with POS suspension and plug-in fastener**

Picture print 300 g/m<sup>2</sup>

Offset printing 4c/4c

closed 97 x 135 mm

open 196 x 235 mm | 6-sided

MOQ: 500 pieces

CUSTOMI-  
SED  
FORMATS

**981-002-0034**

**Card carrier with POS-  
suspension and tear-  
perforation**

Offset paper white smooth 250 g/m<sup>2</sup>

Offset printing 4c/0

closed 97 x 135 mm | 2-sided

MOQ: 500 pieces



### Carrier with sealed card

Carriers in which the card is sealed are a special form of card carrier. Perforated openings are usually provided so that the customer or recipient can remove the card. Both the type of opening and the shape of the card holder are flexible and can be customised.

### Further options:

- UV varnish
- Lamination
- Hot stamping foil
- Environmentally friendly material
- Customised formats



# Folding card simple

**TOPSELLER**



## 981-003-0001 Single folding card, standard

Picture print 300 g/m<sup>2</sup>  
Offset printing 4c/4c  
closed 115 x 110 mm open  
230 x 110 mm | 4-sided  
MOQ: 500 pieces

## 981-001-0028 Transparent envelope with pointed flap

wet-adhesive  
Offset paper 80 g/m<sup>2</sup>  
closed 120 x 120 mm  
MOQ: 500 pieces



## 981-003-0017 Folding card DIN long

Picture print 300 g/m<sup>2</sup>  
Offset printing 4c/4c  
closed 210 x 100 mm  
open 410 x 100 mm | 4-sided  
MOQ: 500 pieces

From four to six pages, the simple folding card offers plenty of potential for a successful gift or loyalty card campaign. With card inserts or attached with sticky dots, your card is perfectly presented. Optional features such as the detachable attachment or inserts make the folding cards ideal for both online and off-line retail.

### Further options:

- UV varnish
- Lamination
- Hot stamping foil
- Environmentally friendly material
- Customised formats

## Folding card simple

**TOPSELLER**

**981-003-0007**

**Folded card with  
plug-in fastener, horizontal**

Picture print 350 g/m<sup>2</sup>

Offset printing 4c/4c

closed 174 x 105 mm

open 380 x 105 mm | 6-sided

MOQ: 500 pieces



**981-003-0026**

**Single folded card, A6,  
with insert**

Offset paper 300 g/m<sup>2</sup> | offset printing 4c/4c

closed 105 x 148 mm

open 210 x 148 mm | 4-sided

MOQ: 500 pieces



**981-003-0025**

**Folded card DIN A6,  
with snap fastener**

Picture print 350 g/m<sup>2</sup>

Offset printing 4c/4c

closed 148 x 105 mm open

326 x 105 mm | 6-sided

MOQ: 500 pieces



## Folding card simple



### 981-003-0029 Single folded card with insert, rounded corners

Picture print 350 g/m<sup>2</sup>  
Offset printing 4c/4c  
closed 145 x 105 mm  
open 292 x 105 mm | 4-sided  
MOQ: 500 pieces

### 981-003-0010 Folding card DIN long can be folded upwards

Picture print 300 g/m<sup>2</sup>  
Offset printing 4c/4c  
closed 210 x 98 mm  
open 210 x 196 mm | 4-sided  
MOQ: 500 pieces



### 981-003-0020 Simple card cover

Picture print 300 g/m<sup>2</sup>  
Offset printing 4c/0  
closed 62 x 90 mm | 2-sided  
MOQ: 500 pieces



## Folding card simple

**TOPSELLER**



**981-003-0016**  
Single folding card,  
can be folded upwards

Offset paper 250 g/m<sup>2</sup> or  
Kraft paper brown 290 g/m<sup>2</sup> or  
Grass paper 300 g/m<sup>2</sup>  
Offset printing 4c/4c  
closed 105 x 75 mm  
open 105 x 150 mm | 4-sided  
MOQ: 500 pieces



**981-002-0014**  
Folding upright card holder

Picture print 300g/m<sup>2</sup>  
Offset printing 4c/4c  
closed 97 x 135 mm  
open 97 x 193 mm  
MOQ: 500 pcs





# Folding card double

**TOPSELLER**



## **981-004-0001** **Folding card double, Standard small**

Chromo board 300 g/m<sup>2</sup> or  
Recycled chromo board 300 g/m<sup>2</sup>  
Offset printing 4c/0  
closed 119 x 87 x 4 mm  
open 242 x 87 mm  
MOQ: 1000 pieces



## **930-0003** **Rectangular envelope, with adhesive seal**

120 g/m<sup>2</sup> offset paper white  
130 x 93 mm  
MOQ: 1000 pieces



## **981-004-0040** **Folding card double, small**

Chromo board 300 g/m<sup>2</sup>  
Offset printing 4c/0  
closed 119 x 87 x 3 mm  
open 119 x 177 mm  
MOQ: 1000 pieces

Whether for gift cards or loyalty cards- the double folded card makes a high-quality and sturdy impression for every occasion. If that's not enough, you also have the option of enhancing the card packaging with UV varnish, hot-stamped foil and more. The double gluing also offers space for inserts - suitable for your booklet.

### **Further options:**

- UV varnish
- Lamination
- Embossing
- Hot stamping foil
- Environmentally friendly material
- Customised format
- Optional booklet punching

## Folding card double

HIGH  
QUALITY  
& STABLE

**981-004-0023**

**Double folded card,  
square, can be folded  
upwards, with  
tied card holder**

Chromo board 300 g/m<sup>2</sup>  
Offset printing 4c/0  
closed 120 x 120 x 3 mm  
open 120 x 243 mm  
MOQ: 1000 pieces  
*with 3-fold glued underside  
for card indentation*



**981-004-0018**

**Folding card double, DIN long**

Chromo board 300 g/m<sup>2</sup>  
Offset printing 4c/0  
closed 210 x 105 x 4 mm  
open 424 x 105 mm  
MOQ: 1000 pieces

**981-004-0026**

**Folding card double**

Chromo board 300 g/m<sup>2</sup>  
Offset printing 4c/0  
closed 114 x 146 x 3 mm  
open 231 x 143 mm  
MOQ: 1000 pieces



## Folding card double

### 981-004-0005

#### Folding card double, square

Chromo board 300 g/m<sup>2</sup> | offset printing 4c/0

closed 148 x 148 x 4 mm

open 300 x 148 mm

MOQ: 1000 pieces



### 981-004-0043

#### Folding card double, oblong

Chromo board 300 g/m<sup>2</sup>

Offset printing 4c/0

closed 150 x 100.5 x 2 mm

open 150 x 203 mm

MOQ: 1000 pieces

### 981-004-0039

#### Double folded card, with elongated slit punching

Chromo board 240 g/m<sup>2</sup>

Offset printing 4c/4c

optional: hologram film

closed 124 x 100 x 3 mm

open 251 x 100 mm

MOQ: 1000 pieces



### 981-001-0047

#### Envelope with pointed flap

Picture print 135 g/m<sup>2</sup>

Offset printing 4c/0

closed 130 x 105 mm

MOQ: 5000 pieces



## Folding card double

**981-004-0020**

**Square folding card,  
with punched hole for card  
and booklet**

Chromo board 300 g/m<sup>2</sup>  
Offset printing 4c/0  
closed 160 x 160 x 3 mm  
open 323 x 160 mm  
MOQ: 1000 pieces



**981-004-0050**

**Semi-double folded card**

Twin Paper 340g/m<sup>2</sup>  
Offset printing 4c/4c  
closed 120 x 80 mm  
open 120 x 150 mm  
MOQ: 1000 pieces  
*with glued underside for  
Card slot pocket*



**981-011-0013**

**Folding card with recessed card  
holder and insert tab for flyers**

Picture print 300 g/m<sup>2</sup>  
Offset printing 4c/0  
closed 170 x 170 x 4 mm  
open 340 x 170 mm  
MOQ: 1000 pieces



## Folding card double



**981-004-0034**

**Double folded card, with side insert**

Symbol Tatami White matt coated  
250 g/m<sup>2</sup> | offset print 4c/0  
closed 125 x 125 x 3 mm  
open 253 x 125 mm | MOQ: 1000 pieces



**981-001-0019**

**Square envelope,  
with adhesive seal**

Symbol Tatami White matt coated  
150 g/m<sup>2</sup>  
Offset printing 4c/0  
closed 140 x 140 mm  
30 mm flap  
MOQ: 1000 pieces



**981-004-0014**

**Double folded card,  
with insert for several cards**

other strap colours available  
Chromo board 215 g/m<sup>2</sup>  
Offset printing 4c/0  
closed 90 x 130 x 1.5 mm  
open 181.5 x 130 mm  
MOQ: 1000 pieces

**981-004-0035**

**Double folded card, with punched hole  
for booklet and satin ribbon**

Chromo board 300 g/m<sup>2</sup> | coated on one side  
Offset printing 4c/4c  
closed 170 x 170 x 3 mm  
open 343 x 170 mm | MOQ: 1000 pieces



# Packaging in box form

**TOPSELLER**



**981-007-0010**

**Box with magnetic closure**

Cardboard 1200 g/m<sup>2</sup>

Card inlay with thumb cut-out

closed 129 x 80 x 26 mm (outer dimensions)

Standard production,

available colours white/bronze/silver

(coated paper), black/brown (uncoated paper),

MOQ: 50 pieces

MOQ individual production: 1000 pieces

**981-007-0007**

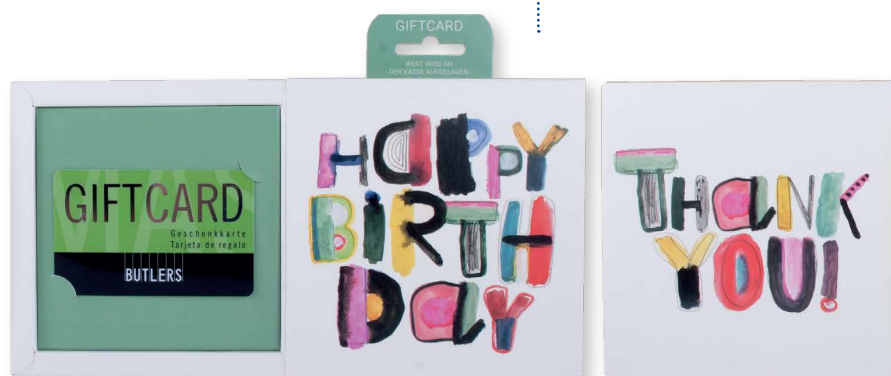
**Slider box with cavity and optionally detachable POS suspension**

Chromo board white 300 g/m<sup>2</sup>

Offset printing 4c/0-colour

closed 125 x 125 x 20 mm

MOQ: 200 pieces



## Packaging in box form

### 981-007-0012

#### Box with ribbons at the front

Cardboard 1200 g/m<sup>2</sup>  
 Card inlay with thumb cut-out  
 closed 133 x 89 x 18 mm  
 Standard production,  
 available colour: white with black satin ribbon /  
 black with black satin ribbon  
 MOQ: 50 pieces  
 MOQ individual production: 1000 pieces  
 (other strap colours available)



### 981-007-0014

#### Box with magnetic closure and side ribbons

Cardboard 1200 g/m<sup>2</sup>  
 closed 129 x 80 x 26 mm (outer dimensions)  
 incl. magnetic closure and card inlay with  
 thumb cut-out, ribbon on the left and right  
 (each side 1.6 cm wide, 31 cm long)  
 MOQ: 1000 pieces

### 981-007-0005

#### Slip lid box

Cardboard 1.2 mm covered with 120 g paper  
 Offset printing 4c/0  
 Square grip hole, long  
 closed 120 x 90 x 15 mm  
 MOQ: 1000 pieces



### 981-007-00025

#### Box with magnetic closure for 2 cards

Cardboard 1200 g/m<sup>2</sup>  
 Card inlay with thumb cut-out  
 closed 200 x 80 x 20 mm (outer dimensions)  
 MOQ individual production: 1000 pieces

# Carrier card with cover

**981-009-0009**

## Carrier card with sleeve, with card slot

Cover open on both sides  
Backing card chromo cardboard 300 g/m<sup>2</sup>  
Offset printing 4c/0-colour,  
closed 142 x 105 mm  
Cover chromo cardboard 300 g/m<sup>2</sup>  
Offset printing 4c/0  
closed 143 x 112 mm  
MOQ: 1000 pieces



**981-009-0010**

## Carrier card with sliding effect and cover

Backing card chromo card 280 g/m<sup>2</sup>  
Offset printing 4c/0  
closed 128 x 90 mm  
open 128 x 181 mm  
Cover chromo cardboard 280 g/m<sup>2</sup>  
Offset printing 4c/0  
closed 132 x 97 mm  
MOQ: 1000 pieces

**981-009-0008**

## Carrier card with cover, with punching out

Chromo board 300 g/m<sup>2</sup>  
Offset printing 4c/0  
closed 143 x 90 x 4 mm  
MOQ: 1000 pieces



Better safe than sorry. While the plastic card remains securely in its holder, the sleeve offers additional protection. As a folded card, the carrier also has enough space for lots of information or greetings cards. The carrier and sleeve can be customised and finished with embellishments.

### Further options:

- UV varnish
- Embossing
- Spot varnish
- Environmentally friendly material
- Lamination
- Hot stamping foil



# Packaging with effect

**TOPSELLER**



**981-010-0035**

**Pop-up pack with snap fastener and insert pocket for DIN long flyers**

Packaging with a surprise effect

Chromo board 220 g/m<sup>2</sup>

Offset printing 4c/4c

closed 21,4 x 11,1 mm

open 26,2 x 21,4 mm

MOQ: 1000 pieces

**981-010-0043**

**Push and pull packaging, Standard**

Chromo board 250 g/m<sup>2</sup>

Offset printing 4c/0

closed 138 x 82 x 6 mm

open 360 x 82 x 6 mm

MOQ: 1000 pieces



**981-010-0011**

**Push and pull packaging, with viewing window**

Chromo board 275 g/m<sup>2</sup>

Offset printing 4c/0

closed 138 x 81,5 x 5,5 mm

open 367 x 81,5 x 5,5 mm

MOQ: 1000 pieces

## Packaging with effect

### 981-010-0017 Slider bag with satin ribbon

Chromo board 275 g/m<sup>2</sup>  
Offset printing 4c/0  
closed 103 x 102 x 6 mm  
open 103 x 258 x 6 mm  
MOQ: 1000 pieces



### 981-010-0029 Slider bag with handle

Chromo board 250 g/m<sup>2</sup>  
Offset printing 4c/0  
closed 100 x 100 x 5 mm  
open 100 x 178 x 5 mm  
MOQ: 500 pieces

## TOPSELLER

### 981-010-0037 Slider packaging

Chromo board 275 g/m<sup>2</sup>  
Offset printing 4c/0  
closed 147 x 90 x 4 mm  
open 268 x 90 mm  
MOQ: 500 pieces



## Packaging with effect

### 981-010-0044 Slider packaging bow

Punch-out for card on train side  
Chromo board 250 g/m<sup>2</sup>  
Offset printing 4c/0  
closed 95 x 110 x 3 mm  
95 x 153 x 3 mm incl. loop  
MOQ: 1000 pieces



### 981-010-0027 Push and pull packaging "flower pot"

Kraft paper 290 g/m<sup>2</sup>  
Offset printing 4c/0  
closed 105 x 107 x 7 mm  
open 105 x 240 x 7 mm  
MOQ: 1000 pieces

Push and pull packaging is an elegant and practical packaging solution that consists of two parts: an outer slipcase (also known as a sleeve) and an inner cardboard insert or drawer. When opening, a gentle "pull" effect is created, which makes the unpacking look particularly high-quality - comparable to opening a small box. Perfect for giving customers a high-quality first impression.

#### Further options:

- UV varnish
- Lamination
- Embossing
- Hot stamping foil
- Environmentally friendly material

## Packaging with effect

**981-010-0042**

**Push and pull packaging,  
Popcorn**

Chromo board 275 g/m<sup>2</sup>  
Offset printing 4c/0  
closed 149 x 106 x 6 mm  
open 332 x 110 x 6 mm  
MOQ: 1000 pieces



**981-010-0039**

**Push and pull packaging,  
Pommes**

Chromo board 275 g/m<sup>2</sup>  
Offset printing 4c/0  
closed 149 x 110 x 6 mm  
open 308 x 106 x 6 mm  
MOQ: 1000 pieces

**981-010-0031**

**Push and pull packaging,  
with product compartment**

Chromo board 275 g/m<sup>2</sup>  
Offset printing 4c/0  
closed 148 x 102 x 19 mm open 382  
x 102 x 19 mm  
MOQ: 1000 pieces



## Packaging with effect

### TOPSELLER



**981-010-0049**

#### Push and pull card holder without handle

Kraft paper 290 g/m<sup>2</sup> or  
Chromo board 265 g/m<sup>2</sup>  
Offset printing 4c/0  
closed 107 x 107 x 4 mm  
open 107 x 264 x 4 mm  
MOQ: 1000 pieces



**981-010-0016**

#### Standard card holder

Chromo board 275 g/m<sup>2</sup> | offset printing 4c/0  
closed 105 x 100 mm  
or 157 x 6 mm with handle  
open 105 x 253 x 6 mm  
MOQ: 1000 pieces



#### Card holder

The card holder with or without a handle is a real eye-catcher. Whether as a push and pull variant or just with a pull mechanism - this card packaging makes an impressive appearance, especially at the POS.

In addition to the usual finishing options, the pouch can optionally be fitted with a handle made of satin ribbon or wire-reinforced paper cord.

#### Further options:

- Matt or glossy film lamination
- UV varnish
- Embossing
- Hot stamping foil
- Environmentally friendly material
- Optional bag holder made from satin ribbon



# Environmentally friendly Packaging



## 981-002-0001 Card holder with POS suspension

Kraft paper brown 290 g/m<sup>2</sup>  
Offset printing 4c/4c  
95 x 135 mm | 2-sided  
MOQ: 500 pieces

SUS-  
TAINA-  
BLE

## 981-003-0016 Single folding card, can be folded upwards

Kraft paper brown 290 g/m<sup>2</sup>  
Offset printing 1c/1c  
closed 75 x 105 mm  
open 105 x 150 mm  
MOQ: 250 pieces



## 981-001-0053 Envelope with pointed flap

wet adhesive  
Kraft paper brown 125g/m<sup>2</sup>  
closed 114 x 81 mm  
MOQ: 250 pieces

Sustainability and the protection of our environment is a matter close to our hearts, which we also want to offer you in the form of environmentally friendly packaging. Kraft and grass paper are particularly popular due to their ecological appearance. **We also offer the majority of our packaging in sustainable materials.** Please let us know your requirements.

### Further options:

- UV varnish
- Lamination
- Embossing
- Hot stamping foil
- Slot for booklet

## Environmentally friendly packaging



### 981-007-0010 Box with magnetic closure

Cardboard 1200 g/m<sup>2</sup>  
Card inlay with thumb cut-out  
closed 129 x 80 x 26 mm (outer dimensions)  
Standard production,  
Kraft paper brown, (uncoated paper)  
MOQ: 50 pieces  
MOQ individual production: 1000 pieces

### 981-010-0024 Push and draw card holder without handle

Kraft paper brown 290 g/m<sup>2</sup> | Offset print 1c/0  
closed 105 x 100 x 6 mm  
open 105 x 253 x 6 mm  
MOQ: 1000 pieces



### 981-004-0001 Folding card double, standard small

Grass paper 300 g/m<sup>2</sup> | offset printing 4c/0  
closed 119 x 87 x 4 mm  
open 242 x 87 mm  
MOQ: 1000 pieces

### 981-001-0039 Envelope with pointed flap

wet-adhesive | grass paper 130g/m<sup>2</sup>  
closed 128 x 95 mm  
MOQ: 5000 pieces

## Environmentally friendly packaging



### 981-004-0005 Folding card double, square






Kraft paper brown 290 g/m<sup>2</sup>  
Offset printing 4c/0  
closed 148 x 148 x 4 mm  
open 300 x 148 mm  
MOQ: 1000 pieces

### 981-002-0051 Card carrier with punching

Kraft paper brown 300g/m<sup>2</sup>  
Offset printing 4c/4c  
97 x 135 mm  
MOQ: 1000 pcs



## Environmentally friendly cards in comparison

	 paper	 Grass paper	 BIO PVC	 PET-G	 Recycled plastic
biodegradable	✓	✓	✓	✗	✗
recyclable	✓	✓	✓	✓	✓
compostable	✓	✓	✗	✗	✗
flammable	✓	✓	✗	✗	✗

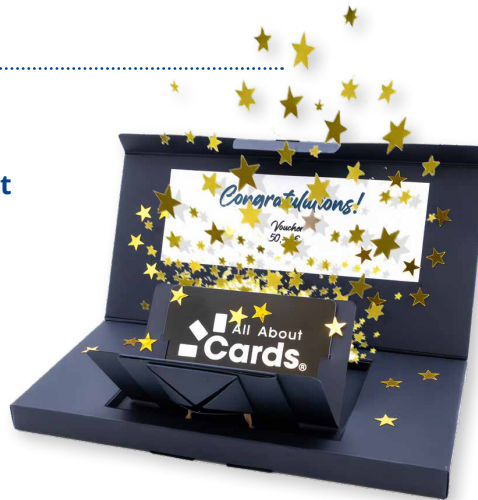
# Premium packaging solutions

981-010-0050

## Confetti packaging

Pop-up packaging with spinning effect

Offset paper 350g  
Offset printing 4c/0  
214 x 105 x 18 mm  
MOQ: 1000 pcs



ESPECIALLY



981-011-0012

## Soft-touch box with magnetic closure

with magnetic closure, rubber band holder  
for card and inlay for booklet  
Chromo cardboard 1.5 mm with  
approx. 120 g/m<sup>2</sup> soft-touch black cover,  
1-colour print with Pantone Silver 877C  
closed 171.5 x 171.5 x 25 mm (inside dimension)  
181 x 181 x 30 mm (outside dimension) | MOQ: 1000 pieces

### Unique gift card campaign

There are no limits to your creativity: While the pop-up and soft-touch boxes are plain black, the contents come in a variety of colours and with great surprise effects. Design gift sets in different motifs to strengthen the individuality of your customers. The vouchers can be purchased online and offline. With the help of surface finishes such as hot stamping or textured

varnish, the patterns on the cards are particularly effective. The high-quality soft-touch surface ensures an appealing feel, making the boxes particularly easy to hold. With a customised design, space for personal lines and variable card value, the result is a premium gift card programme that offers your customers a high degree of flexibility and looks great at the same time.



## Products



### 981-011-0006 Zenit" box with felt decor

Lid covered with "Rives Basane"  
"Swissôtel Circle" in the form of red, finely punched felt, glued to the lid | two cardboard shelves, covered with "Gmund BeeBrilliant", finished with details made of hot-stamped foil in silver and red  
Compartments for booklet, booklet and pen  
Felt fastener with press stud  
200 x 200 x 50 mm



### 981-011-0002 Lined folding card with card punching and pocket for "Eleva" booklet

Image printing matt 300 g/m<sup>2</sup> | offset printing 4c/0  
closed 162 x 164 x 8 mm  
open 322 x 164 mm | MOQ: 1000 pieces



### 981-011-0001 Lined folded card with card punching and pocket for booklet "Inizia"

Image printing matt 300 g/m<sup>2</sup> | offset printing 4c/0  
closed 170 x 170 x 4 mm  
open 343 x 170 mm | MOQ: 1000 pieces

## High-quality loyalty programme

Being loyal pays off for your customers - we are happy to support you in implementing your extensive and high-quality customer loyalty programme. Address your customers with cards and packaging in different variations. The three packaging sets shown here are customised and include a card, a booklet and, for particularly loyal customers, an additional partner card and a high-quality pen. All materials are sustainably produced and partly handmade.

We produce the packaging and design entirely according to your wishes. You are free to choose the materials and finishes - be it felt, hot stamping foil or embossing. The elegant packaging turns your card into a truly impressive event.



# Festive packaging solutions



## 981-007-0015 Packaging for chocolate bar

Cavity packaging with inlay and sleeve  
Inlay with slot punching  
Printing on cavity packaging,  
inlay and banderole 4c/0,  
Chromo cardboard 300 g/m<sup>2</sup>  
Outer format: 105 x 192 x 18 mm  
MOQ 1000 pieces

## 981-011-0015 Gift box

Individually designable



### Festive solutions for your customers

You will find unique, festive packaging for your Christmas campaigns in our portfolio. Whether it's fine chocolates or unusual Advent calendars, we will design the perfect packaging solution for your festive campaign. The final design is tailored to your company and is al-

ways unique. Optionally with a personalised cover letter.

To ensure timely delivery for your shops, on-line shop or planned shipping, we recommend starting planning and production as early as possible.

## Festive packaging solutions



981-011-0014

**Advent calendar made from corrugated cardboard**

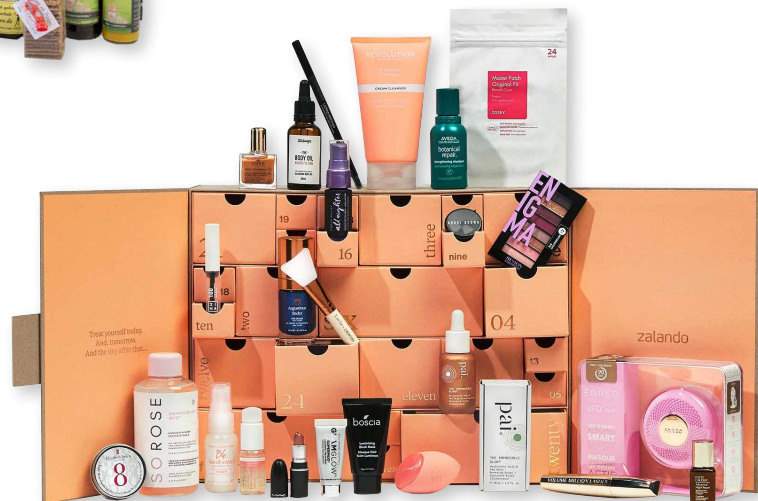
Individually designable

UNIQUE  
KIND

981-011-0014

**Advent calendar with drawers**

Individually designable



981-011-0014

**Advent calendar with folding boxes**

Individually designable

# Packaging as a mailing solution

**981-011-0009**

**Hollow shipping carton  
with perforation and inlay**

Ensocoat 350 g (coated on both sides)  
Offset printing 4c/4c  
closed 230 x 202 x 21.5 mm  
open 471 x 230 x 21.5 mm  
MOQ: 250 pieces



We skilfully showcase your customer card with the right mailing. You can choose not only the simple letter in DIN-long format, but also customised format. Thanks to video synchronisation during automated mailing, your card will sit perfectly on the mailing.

The personalised letter, packaging and plastic card will reach your customers easily and securely.

## Further options:

- UV varnish
- Lamination
- Embossing
- Hot stamping foil
- Insert for cards & inserts
- Cards & inserts
- Environmentally friendly material

**981-001-0021**

**DIN long envelope,  
with perforation and adhesive seal**

Image printing 300 g/m<sup>2</sup> | offset printing 4c/0  
closed 215 x 108 x 7 mm  
MOQ: 1000 pieces

**981-009-0002**

**Carrier card with cover and  
hinged carrier**

Image printing 300 g/m<sup>2</sup> | offset printing 4c/0  
Cover chromo cardboard 250 g/m<sup>2</sup>  
Offset printing 4c/0 | carrier card 138 x 100 x 3 mm  
Envelope 140 x 102 x 4 mm | MOQ: 1000 pieces



## Packaging as a mailing solution

**981-004-0042**

**Folding card with recessed card holder and insert tab for booklet**

Image printing 300 g/m<sup>2</sup> | offset printing 4c/4c  
closed 170 x 170 x 4 mm  
open 344 x 170 mm  
MOQ: 1000 pieces



**PERSO-  
NALISED**

**981-001-0022**

**Square envelope, with perforation and adhesive seal**

Picture print 350 g/m<sup>2</sup>  
Offset printing 4c/4c  
closed 172 x 172 x 8 mm  
open 420 x 296 mm  
MOQ: 1000 pieces



**981-004-0018**

**Folding card double, DIN long**

Chromo cardboard 300 g/m<sup>2</sup> | offset printing 4c/0  
closed 210 x 105 x 4 mm  
open 424 x 105 mm  
MOQ: 1000 pieces

**930-0002**

**Cover letter DIN A4**

Offset paper 80 g/m<sup>2</sup> | offset printing 4c/0  
MOQ: 500 pieces

**930-0003**

**Envelope DIN long, with or without window**

Adhesive or wet gluing | Offset paper 75 g/m<sup>2</sup>  
Offset printing 4c/0 | MOQ: 500 pieces

## Packaging as a mailing solution

### 930-0003

#### Envelope DIN long, with or without window

Pressure-sensitive or wet bonding  
Offset paper 75 g/m<sup>2</sup> | offset printing 4c/0  
MOQ: 500 pieces

### 981-002-0020

#### Flyer DIN long, fold-out

Card donated  
Picture printing 250 g/m<sup>2</sup> | offset printing 4c/4c  
closed 210 x 105 mm  
open 210 x 210 mm | 4-sided  
MOQ: 500 pieces



### 981-002-0004

#### Flyer with attached card, incl. perforated form

Picture print matt 150 g/m<sup>2</sup>  
Offset printing 4c/4c  
closed 99 x 210 mm  
open 297 x 210 mm | 6 pages  
MOQ: 500 pieces

### 981-010-0048

#### Push-and-pull packaging DIN long

Chromo board 275 g/m<sup>2</sup> | offset printing 4c/0  
closed: 210 x 105 x 3.5 mm  
open 533 x 105 x 3.5mm | MOQ: 1000 pcs



### 981-008-0010

#### Shipping packaging DIN long

Chromo board 275 g/m<sup>2</sup> | offset printing 4c/0  
closed 220 x 110 x 8 mm  
open 307 x 338 mm  
with adhesive strip and tear perforation





## Packaging as a mailing solution

**981-008-0006**

**Folding card, oblong,  
with perforated coupons**

Offset paper 250 g/m<sup>2</sup> | offset printing 4c/4c  
closed 210 x 100 mm  
open 420 x 200 mm | MOQ: 500 pieces



**930-0003**

**Envelope DIN long, with or without window**

Adhesive or wet bonding  
Offset white 80 g/m<sup>2</sup> | Offset printing 4c/0  
closed 220 x 110 mm  
MOQ: 500 pieces



**930-0005**

**Application form DIN A5, with perforation**

Card donated  
Picture printing 250 g/m<sup>2</sup> | offset printing 4c/4c  
closed 148 x 210 mm  
open 296 x 210 mm  
4-sided | MOQ: 500 pieces



**930-0001**

**Flyer DIN A5**

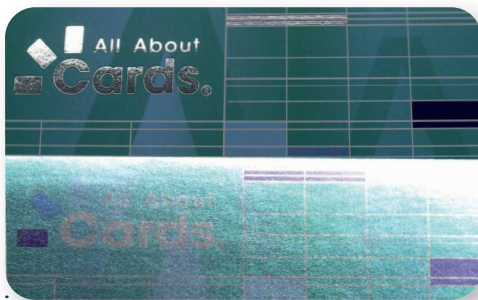
Card donated  
Picture printing 250 g/m<sup>2</sup> | offset printing 4c/4c  
closed 148 x 210 mm | 2-sided  
MOQ: 500 pieces

**981-001-0054**

**Envelope DIN C5, with window and adhesive strip**

Offset paper 80 g/m<sup>2</sup> | offset printing 4c/0  
MOQ: 500 pieces

# Refinements and Card holders



**Finishing once with hot embossing foil and UV varnish on top**



**Finishing with UV varnish and blind embossing**



**Finishing with Hololam foil**  
e.g. page 15



**Finishing with blind embossing**  
e.g. page 30



**Card holder on the side**  
e.g. page 13



**Card slot at the bottom**  
e.g. page 15



**Slot punching diagonally**  
e.g. page 9

What we offer

# Our services

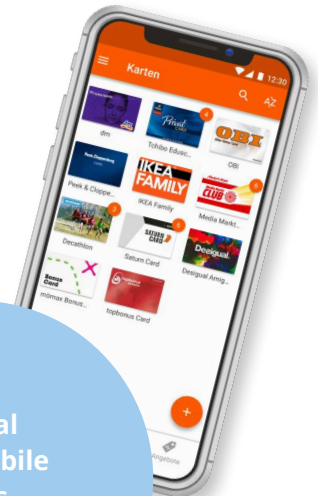




Innovative  
and user-friendly  
software and card  
systems as well as  
matching accesso-  
ries



Modern and  
powerful  
printers, reading and  
coding systems



Digital  
and mobile  
Cards-  
solutions



Data collection  
for your B2B/B2C  
Customer loyalty  
programme



### Competence around the Cards



Printer



Software



Cards



Card  
Service



Card  
Accessories



Card  
Systems

### All About Cards S&K Solutions GmbH

 Sailerwöhr 16, 94032 Passau

 +49 851 200930-10

 [info@sk-solutions.com](mailto:info@sk-solutions.com) | [info@allaboutcards.de](mailto:info@allaboutcards.de)

 [www.sk-solutions.com](http://www.sk-solutions.com) | [www.allaboutcards.de/en](http://www.allaboutcards.de/en)

